



Search...



Subscribe

Login

BREAKING NEWS WATCH NOW WORLD POLITICS SPORTS TECH FINANCE STORIES WEATHER MEDRIVA

FOLLOW US MORE SECTIONS

Go all in on all your ideas. Design illustrations, edit photos, and more with Adobe Creative Cloud All Apps. Try for free

BNN Newsroom

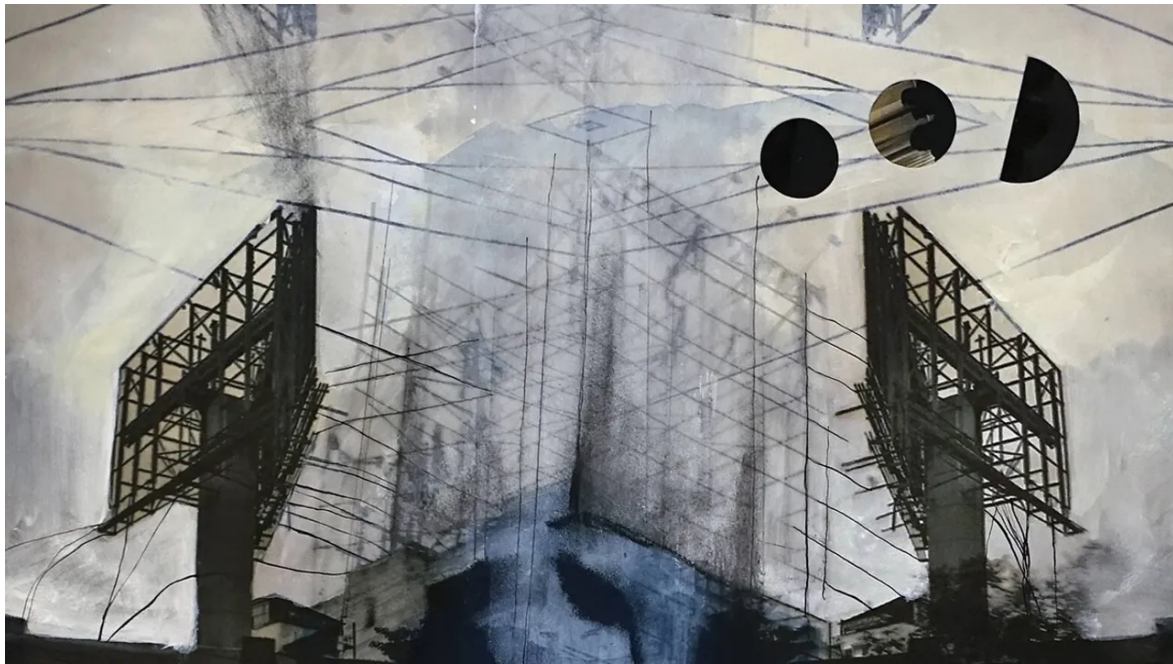
Gauri Gill Spearheads Groundbreaking Exhibition in Dubai: Exploring the Nexus of Urbanity, Nature, and Divinity

Explore the fusion of urbanity, nature, and divinity at the Ishara Art Foundation's 'Sheher, Prakriti, Devi' exhibition in Dubai, curated by Gauri Gill. Discover a tapestry of themes challenging conventional narratives and envisioning a confluence of worlds.

BNN Correspondents 27 Feb 2024 08:10 EST



Follow Us



Gauri Gill Spearheads Groundbreaking Exhibition in Dubai: Exploring the Nexus of Urbanity, Nature, and Divinity

In the heart of Dubai, a city famed for its towering skyscrapers and bustling urban life, the Ishara Art Foundation introduces a refreshing narrative that weaves together the essence of urbanity, nature, and

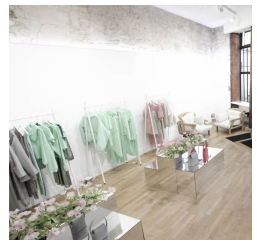


GALERIE JOSEPH PARIS

Louez votre à Paris

Art - Design - Mode - Events

Visit Site

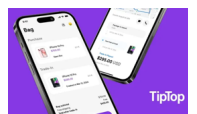


Contact

Latest Stories



Pakist Imme Amid Aurar



TipTo Revol Trade Lehm

divinity. The exhibition titled 'Sheher, Prakriti, Devi'—curated by the esteemed artist and photographer Gauri Gill—marks a significant milestone as Gill's first major curatorial endeavor in the Middle East. Running until June 1, this exhibition invites audiences to explore the intricate relationships between dynamic cities, the natural environment, and sacred elements through the lens of twelve artists and collectives.

Keep your creativity going with 20+ apps. Get the Adobe Creative Cloud All Apps plan. [Learn more](#)

A Tapestry of Themes

'Sheher, Prakriti, Devi' draws from the rich tapestry of themes that Gill has been exploring since 2003 in her 'Rememory' series, documenting urban and semi-urban spaces in India. The exhibition showcases how life-worlds not only shape cities but also how nature and built environments intersect, revealing a myriad of interactions within these spaces. The artworks, sourced from private collections and supported by organizations like ZEISS Vision and J. Safra Sarasin, highlight various forms of life and their interactions within urban, rural, domestic, and spiritual spaces. Artists featured in the show include Chamba Rupal, Chiara Camoni, Gauri Gill, among others, each bringing their unique perspective to the fore.

Challenging Conventional Narratives

Go all in on all your ideas. Design illustrations, edit photos, and more with Adobe Creative Cloud All Apps. [Try for free](#)

At the core of 'Sheher, Prakriti, Devi' lies Gill's ambition to challenge the conventional narratives surrounding urban environments and their relationship with the natural world. The exhibition paints a vision where termites render built and natural structures porous, historical ruins become homes to migratory birds, and forests manifest as spirit sisters. This unique portrayal invites viewers to consider ecology as an overlap of cultural, natural, and spiritual domains, urging a reevaluation of the mundane and magical, the depleted and regenerative. Gill's curatorial effort acknowledges those artists who persist in their practice outside the mainstream contemporary art circuits, offering a platform for their voices to be heard.

Envisioning a Confluence of Worlds

Through 'Sheher, Prakriti, Devi', Gill envisions a confluence of worlds where the urban, the natural, and the divine coalesce, offering a nuanced narrative that transcends traditional boundaries. This exhibition not only showcases the beauty and multiple truths expressed by the different artists but also serves as a testament to the resilience and creativity of those who operate outside the limelight of contemporary art discourse. As the exhibition runs until June 1, it presents a unique opportunity for visitors to engage with these interwoven narratives and perhaps, find a new understanding of the spaces they inhabit.



Linke
Arena
to Boc

Subscribe to Newsletter!

Be the first to get exclus latest news

Your Name

Email address

I'm not a robot

Subscribe

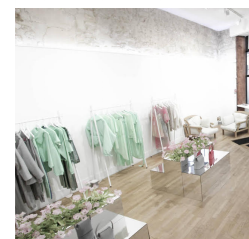


GALERIE JOSEPH PARIS

Louez votre à Paris

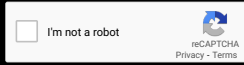
Art - Design - Mode - Events

[Visit Site](#)



Contact

SUBSCRIBE TO OUR NEWSLETTER!



NEWS

- [Breaking News](#)
- [Watch Now](#)
- [World](#)
- [Politics](#)
- [Tech](#)
- [Finance](#)

SECTION

- [Stories](#)
- [Lifestyle](#)
- [Arts & Entertainment](#)
- [Health](#)
- [Sports](#)
- [Conflict & Defence](#)

LINKS

- [About Us](#)
- [Follow Us](#)
- [Contact Us](#)
- [Privacy Policy](#)
- [Terms Of Service](#)
- [Community Guideline](#)
- [Editorial Guidelines](#)
- [Advertise With Us](#)
- [Authors](#)
- [Download BNN App](#)

LATEST STORIES

- [Pakistan Targets PIA For Immediate Privatization Amid Economic Reforms, Aurangzeb Confirms](#)
- [TipTop Shop Launch: Revolutionizing Device Trade-Ins And Purchases, Lehmann's Latest Venture](#)
- [LinkedIn Enters Gaming Arena With In-App Puzzles To Boost Engagement](#)
- [Engage In SIFC Talks, Cooperate With Security For KP: Imran Khan Directs CM Gandapur](#)
- [NATO Chief Jens Stoltenberg's Strategic Visit To Georgia Amid Regional Tensions](#)
- [China-India Tunnel Dispute, Near-Death Insights: Week's Global Highlights](#)
- [Paris Olympics 2024: Spearheading Regeneration In Saint-Denis, Beyond Gentrification](#)
- [Macron's Strategic Shift: From Diplomacy To Possible Military Support In Ukraine](#)
- [PM Shehbaz Sharif Extends Air Chief Marshal Sidhu's Tenure By One Year On Eve Of Retirement](#)